


Floor Light

INSTRUCTION MANUAL

Safety Warnings

- This product is only suitable for connection to a 220-240V~50Hz supply in accordance with current IEE wiring regulations. It is for indoor use only, and not suitable for a bathroom location.
- This fitting is a Class II, Double Insulated product  and does not require an Earth. Live or Neutral **must not** be connected to Earth.
- Do not plug into the mains until your lamp is fully assembled.
- Under no circumstances must this lamp be covered with any material as this could pose a safety hazard. It must be used on a stable, flat surface. This product is not suitable for persons under 14 years old.
- This product contains non-replaceable LEDs. If the LEDs become damaged, they cannot be replaced, and the product must be disposed.
- The lamp must be protected by a 3 amp fuse in the mains plug. If the mains cable becomes damaged it must only be replaced by a technically competent, qualified person.
- If you are in any doubt about your competence please consult a qualified electrician.
- If any modification is made it will invalidate the warranty and may render the product unsafe.
- Allow 10 minutes to cool before replacing, adjusting or cleaning. Clean with a dry cloth only. Do not use liquid or abrasive cleaners on this product.

Assembly/ User Instructions

Before you start

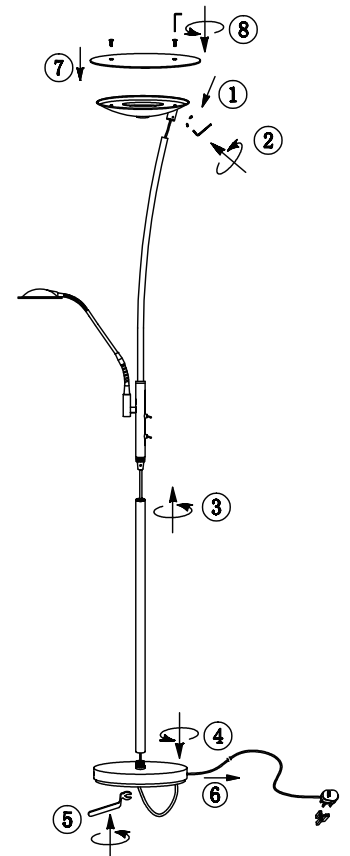
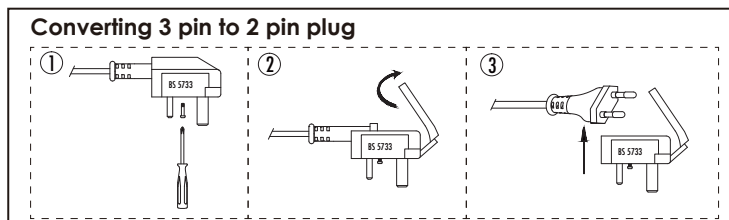
Please read these instructions carefully before fitting and retain for reference. Check the packaging and make sure that you have all the required parts. Follow each assembly step in order to prevent incorrect assembly. Ensure that the product is fully assembled as illustrated before use.

These assembly diagrams are intended as a guide – if in doubt consult a qualified electrician.

1. Carefully unpack your lamp, and place on a stable, flat surface.
2. Fit the LED pan using the grub screws (1) and Allen key (2).
3. Screw the upper stem into the lower section (3), then the stem into the base (4) and secure with the base nut (5). Gently tug the electric wire through (6), ensuring it is not trapped or strained.
4. Fit the glass for the LED pan (7) using the grub screws and Allen key (8).
5. Plug in, and operate the stem switches to turn the lamps on, the top switch activating the 'Mother' lamp, and the bottom switch to activate the 'child' lamp.

If your lamp will not illuminate, please check the 3 amp fuse in the plug and ultimately check the relevant fuse in your fuse box. If unsuccessful please consult your retailer.

To use this item in Europe, the 3 pin adaptor can be removed by loosening the central screw and removing the adaptor to reveal the 2 pin Europe plug.



- EN Scan QR code for multi-language
- FR Scannez le code QR pour plusieurs langues
- ES Escanee el código QR para varios idiomas
- PL Zeskanuj kod QR dla wielu języków
- DE Scannen Sie den QR-Code nach mehreren Sprachen
- IT Scansiona il codice QR per multilingua

73080_73081_30122021



UK Manufacturer: BH17 7BY
EU Manufacturer: Brilliant AG,
Brilliantstrasse 1, D-27442 Gnarrenburg