


# Table Lamp

## INSTRUCTION MANUAL

### Safety Warnings

- This product is only suitable for connection to a 240V~50Hz supply in accordance with current IEE Wiring Regulations. It is for indoor use only, and not suitable for a bathroom location.
- If the Class II, double insulated symbol  is on the lamp, it does not require an Earth, and Live or Neutral **must not** be connected to Earth. If there is no such symbol, then the lamp must be Earthed.
- The lamp must be protected by a 3 amp fuse in the mains plug. Do not plug into the mains until your lamp is fully assembled.
- This product is not suitable for persons under 14 years of age.
- This product must be fitted with a suitable sized shade and must not be covered with any material as this could pose a safety hazard.
- Never fit bulbs of a higher wattage than those specified on the label, as these may cause overheating and damage the fitting. Always observe the lower wattage on base or shade.
- If the mains cable becomes damaged it must only be replaced by a technically competent, qualified person.
- Allow 10 minutes to cool before replacing, adjusting or cleaning. Clean with a dry cloth only. Do not use liquid or abrasive cleaners on this product.
- If you are in any doubt about your competence please consult a qualified electrician.
- If any modification is made it will invalidate the warranty and may render the product unsafe.

### Assembly/ User Instructions

#### Before you start

Please read these instructions carefully before fitting and retain for reference. Check the packaging and make sure that you have all the required parts. Follow each assembly step in order to prevent incorrect assembly. Ensure that the product is fully assembled as illustrated before use.

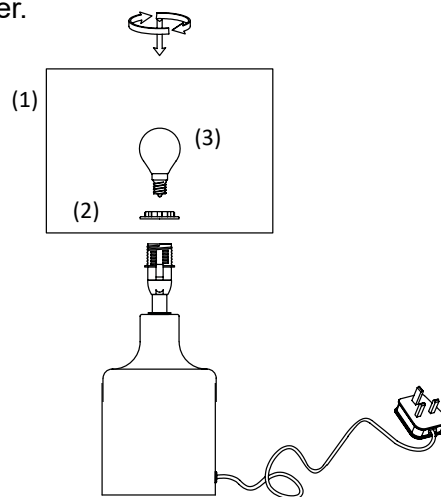
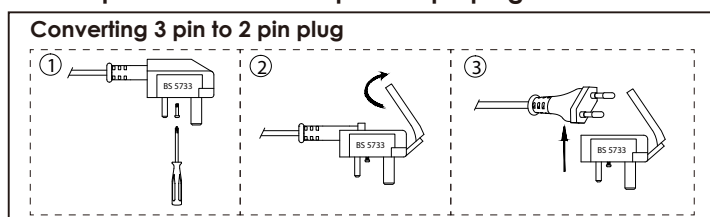
**Please note: While all the steps to assemble your lamp will be the same, your individual product may vary from the diagram below.**

**These assembly diagrams are intended as a guide – if in doubt consult a qualified electrician.**

1. Carefully unpack your lamp, and place on a stable, flat surface.
2. Secure the shade (1) with the shade ring (2), and affix any additional beaded drops.
3. Install the bulb (3). Do not install a bulb with a greater wattage or different shape than specified on the base or shade label.
4. Plug in, and touch the base to turn on.

If your lamp will not illuminate, please check the bulb, the 3 amp fuse in the plug and ultimately check the relevant fuse in your fuse box. If unsuccessful please consult your retailer.

To use this item in Europe, the 3 pin adaptor can be removed by loosening the central screw and removing the adaptor to reveal the 2 pin Europe plug.



- EN Scan QR code for multi-language
- FR Scannez le code QR pour plusieurs langues
- ES Escanee el código QR para varios idiomas
- PL Zeskanuj kod QR dla wielu języków
- DE Scannen Sie den QR-Code nach mehreren Sprachen
- IT Scansiona il codice QR per multilingua